



COVER PAGE FOR LIST OF PRODUCTS FOR CERTIFICATE OF FITNESS FOR CARRIAGE OF DANGEROUS CHEMICALS IN BULK

DNV Id No:
30473
Date of issue:
2025-03-07

Particulars of ship

Name of Ship:	ROYAL LADY
IMO Number:	9300829
Ship Type (Code para. 2.1.2) ¹ :	2

The annexed List of Products was at the date of issuance of this file the valid List(s) of Products for the Certificate of Fitness for Carriage of Dangerous Chemicals in Bulk for the ship as specified.

The validity of the certificate can be obtained from trust.dnv.com.

Issued at **Skagen, Denmark** on **2025-03-07**



for **DNV**

*This document is signed electronically in accordance with IMO
FAL.5/Circ.39/Rev.2. Validation and authentication can be obtained from
trust.dnv.com by using the Unique Tracking Number (UTN):
nN2654295-skw and ID: 30473*

Yury Shishkin

**These Lists of Products are issued in accordance with the
2019 Amendments of the IBC Code and are effective, and
supersede the existing Lists of Products on 1 January 2021**

¹ Ship Type: Any entry must relate to all relevant recommendations, e.g. an entry "Type 2" means Type 2 in all respects prescribed by the Code.

LIST OF PRODUCTS FOR CERTIFICATE OF FITNESS FOR CARRIAGE OF DANGEROUS CHEMICALS IN BULK

This LIST OF PRODUCTS consisting of 26 pages is issued as an attachment to the Certificate of Fitness.

Paragraph 4 of the above mentioned Certificate confirms that the ship meets the requirements for the carriage in bulk of the following products provided that all relevant operational provisions of the Code, and MARPOL Annex II are observed:

Prepared at **Høvik, Norway** on **2020-06-22** by **Mojca Kovacic Dadic, Senior Engineer**.

LIST OF PRODUCTS	Conditions of Carriage		Pollution Category
	Tanks / Tank groups	Footnotes	
Products ⁴⁾⁵⁾ *			
Acetochlor	A, B	22, 23	X
Acetone	A, B	3	Z
Acetonitrile	A, B	17, 28	Z
Acetonitrile (Low purity grade)	A, B	17, 28	Y
Acid oil mixture from soyabean, corn (maize) and sunflower oil refining	A, B	22, 23, 32	Y
Acrylamide solution (50% or less)	A, B	14, 17, 21, 23, 28	Y
Acrylic acid/ethenesulfonic acid copolymer with phosphonate groups, sodium salt solution	A, B		Z
Acrylonitrile	A, B	14, 17, 28	Y
Acrylonitrile-Styrene copolymer dispersion in polyether polyol	A, B	22	Y
Adiponitrile	A, B	17, 23, 28	Z
Alachlor technical (90% or more)	A, B	17, 23, 28	X
Alcohol (C9-C11) poly (2.5-9) ethoxylate	A, B	17, 23, 28	Y
Alcohol (C6-C17) (secondary) poly(3-6)ethoxylates	A, B	17, 23, 28	Y
Alcohol (C6-C17) (secondary) poly(7-12)ethoxylates	A, B	17, 22, 23, 28	Y
Alcohol (C10-C18) poly (7) ethoxylate	A, B	17, 22, 23, 28	Y
Alcohol (C12-C16) poly(1-6)ethoxylates	A, B	17, 23, 28	Y
Alcohol (C12-C16) poly(20+)ethoxylates	A, B	17, 23, 28	Y
Alcohol (C12-C16) poly(7-19)ethoxylates	A, B	17, 23, 28	Y
Alcohols (C12+), primary, linear	A, B	22, 23	Y
Alcohols (C13+)	A, B	23	Y
Alcohols (C8-C11), primary, linear and essentially linear	A, B	17, 22, 23, 28	Y

* Refers to footnotes in the Certificate of Fitness



LIST OF PRODUCTS	Conditions of Carriage		Pollution Category
	Tanks / Tank groups	Footnotes	
Products ⁴⁾⁵⁾ *			
Alcohols (C12-C13), primary, linear and essentially linear	A, B	22, 23	Y
Alcohols (C14-C18), primary, linear and essentially linear	A, B	22	Y
Alcoholic beverages, n.o.s.	A, B	3	Z
Alkanes (C6-C9)	A, B	17, 28	X
Iso- and cyclo-alkanes (C10-C11)	A, B		Y
Iso- and cyclo-alkanes (C12+)	A, B		Y
n-Alkanes (C9-C11)	A, B	28	Y
n-Alkanes (C10-C20)	A, B	6, 22, 23	Y
Alkaryl polyethers (C9-C20)	A, B	17, 22, 28	Y
Alkenoic acid, polyhydroxy ester borated	A, B	17, 22, 28	Y
Alkenyl (C11+) amide	A, B	22, 23	X
Alkenyl (C16-C20) succinic anhydride	A, B	17, 28	Z
Alkyl acrylate/vinylpyridine copolymer in toluene	A, B	17, 23, 28	Y
Alkylaryl phosphate mixtures (more than 40% Diphenyl tolyl phosphate, less than 0.02% ortho-isomers)	A, B		X
Alkylated (C4-C9) hindered phenols	A, B	17, 22, 23, 28	Y
Alkylbenzene, alkylindane, alkylindene mixture (each C12-C17)	A, B		Z
Alkyl benzene distillation bottoms	A, B	22	Y
Alkylbenzene mixtures (containing at least 50% of toluene)	A, B	17, 28	Y
Alkylbenzenes mixtures (containing naphthalene)	A, B	17, 28	X
Alkyl (C3-C4) benzenes	A, B	17, 28	Y
Alkyl (C3-C11) benzenes with phenolformaldehyde/acrylate polymers (33% or less)	A, B	1, 17, 28	X
Alkyl (C5-C8) benzenes	A, B	17, 28	X
Alkyl(C9+)benzenes	A, B		Y
Alkyl (C11-C17) benzene sulphonic acid	A, B	17, 22, 28	Y
Alkylbenzene sulphonic acid, sodium salt solution	A, B	17, 22, 23, 28	Y
Alkyl/cyclo (C4-C5) alcohols	A, B	17, 28	Y
Alkyl (C10-C15, C12 rich) phenol poly (4-12) ethoxylate	A, B	17, 22, 28	Y
Alkyl dithiocarbamate (C19-C35)	A, B	22, 23	Y
Alkyldithiothiadiazole (C6-C24)	A, B	6, 22	Y
Alkyl ester copolymer (C4-C20)	A, B	22, 23	Y
Alkyl (C7-C9) nitrates	A, B	10, 17, 18, 21, 28	Y
Alkyl (C8-C10)/(C12-C14):(40% or less/60% or more) polyglucoside solution (55% or less)	A, B	17, 22, 23, 28	Y

LIST OF PRODUCTS	Conditions of Carriage		Pollution Category
	Products ^{4)5) *}	Tanks / Tank groups	
Alkyl (C8-C10)/(C12-C14):(60% or more/40% or less) polyglucoside solution (55% or less)	A, B	17, 22, 23, 28	Y
Alkyl(C7- C11)phenol poly(4-12) ethoxylate	A, B	17, 28	Y
Alkyl (C8-C40) phenol sulphide	A, B		Z
Alkyl (C8-C9) phenylamine in aromatic solvents	A, B	17, 28	Y
Alkyl (C9-C15) phenyl propoxylate	A, B	17, 28	Z
Alkyl (C8-C10) polyglucoside solution (65% or less)	A, B	17, 22, 28	Y
Alkyl (C8-C10)/(C12-C14):(50%/50%) polyglucoside solution (55% or less)	A, B	17, 22, 23, 28	Y
Alkyl (C12-C14) polyglucoside solution (55% or less)	A, B	17, 23, 28	Y
Alkyl (C12-C16) propoxyamine ethoxylate	A, B	17, 22, 28	X
Alkyl (C10-C20, saturated and unsaturated) phosphite	A, B	23	Y
Alkyl sulphonic acid ester of phenol	A, B	22	Y
Alkyl (C18+) toluenes	A, B	23	Y
Alkyl (C18-C28) toluenesulfonic acid, calcium salts, borated	A, B	22	Y
Alkyl (C18-C28) toluenesulfonic acid, calcium salts, low overbase	A, B	17, 22, 28	Y
Alkyl (C18-C28) toluenesulphonic acid, calcium salts, high overbase	A, B	22	Y
Allyl alcohol	A, B	17, 28	Y
Allyl chloride	A, B	17, 28	Y
Aluminium hydroxide, sodium hydroxide, sodium carbonate solution (40% or less)	A, B	17, 28	Y
Aluminium sulphate solution	A, B	17, 28	Y
2-(2-Aminoethoxy) ethanol	A, B	17, 28	Z
Aminoethyldiethanolamine/Aminoethylethanolamine solution	A, B	17, 23, 28	Z
Aminoethyl ethanolamine	A, B	17, 28	Z
N-Aminoethylpiperazine	A, B	17, 28	Z
2-Amino-2-methyl-1-propanol	A, B	17, 28	Z
Ammonia aqueous (28% or less)	A, B	17, 28	Y
Ammonium chloride solution (less than 25%) (*)	A, B	6	Z
Ammonium hydrogen phosphate solution	A, B	6	Z
Ammonium lignosulphonate solutions	A, B	23	Z
Ammonium polyphosphate solution	A, B		Z
Ammonium sulphate solution	A, B	5	Z
Ammonium sulphide solution (45% or less)(*)	A, B	10, 12, 17, 21, 28	Y
Ammonium thiosulphate solution (60% or less)	A, B		Z
Amyl acetate (all isomers)	A, B		Y
n-Amyl alcohol	A, B	17, 28	Z

LIST OF PRODUCTS	Conditions of Carriage		Pollution Category
	Tanks / Tank groups	Footnotes	
Products ⁴⁾⁵⁾ *			
Amyl alcohol, primary	A, B	17, 28	Z
sec-Amyl alcohol	A, B	17, 28	Z
tert-Amyl alcohol	A, B		Z
tert-Amyl ethyl ether	A, B		Z
tert-Amyl methyl ether	A, B	17, 28	X
Aniline	A, B	17, 28	Y
Apple juice	A, B	4	OS
Aryl polyolefins (C11-C50)	A, B	6, 22, 23	Y
Aviation alkylates (C8 paraffins and iso-paraffins BPT 95 - 120°C)	A, B		X
Barium long chain (C11-C50) alkaryl sulphonate	A, B	17, 22, 23, 28	Y
Benzene and mixtures having 10% benzene or more	A, B	17, 23, 28	Y
Benzene sulphonyl chloride	A, B	17, 23, 28	Y
Benzenetricarboxylic acid, trioctyl ester	A, B	17, 22, 28	Y
Benzyl acetate	A, B	17, 28	Y
Benzyl alcohol	A, B	17, 28	Y
Benzyl chloride	A, B	14, 17, 28	Y
Bio-fuel blends of Diesel/gas oil and FAME (>25% but <99% by volume)	A, B	6, 17, 28	X
Bio-fuel blends of Diesel/gas oil and vegetable oil (>25% but <99% by volume)	A, B	6, 17, 28	X
Bio-fuel blends of Gasoline and Ethyl alcohol (>25% but <99% by volume)	A, B	6, 17, 28	X
Bis(2-ethylhexyl) terephthalate	A, B	22	Y
Brake fluid base mix: Poly(2-8)alkylene (C2-C3) glycols/Polyalkylene (C2-C10) glycols monoalkyl (C1-C4) ethers and their borate esters	A, B	6	Z
Butene oligomer	A, B		X
2-Butoxyethanol (58%)/ Hyperbranched polyesteramide (42%) (mixture)	A, B	17, 28	Y
Butyl acetate (all isomers)	A, B		Y
Butyl acrylate (all isomers)	A, B	10, 14, 21	Y
n-Butyl alcohol	A, B	3	Z
sec-Butyl alcohol	A, B	3	Z
tert-Butyl alcohol	A, B		Z
Butylamine (all isomers)	A, B	17, 28	Y
Butylbenzene (all isomers)	A, B	17, 28	X
Butyl benzyl phthalate	A, B	17, 28	X
Butyl butyrate (all isomers)	A, B		Y
Butyl/Decyl/Cetyl/Eicosyl methacrylate mixture	A, B	10, 14, 21	Y
Butylene glycol	A, B		Z
n-Butyl ether	A, B	12	Y
Butyl methacrylate	A, B	10, 14, 21	Z

LIST OF PRODUCTS	Conditions of Carriage		Pollution Category
	Products ⁴⁾⁵⁾ *	Tanks / Tank groups	
n-Butyl propionate	A, B		Y
Butyraldehyde (all isomers)	A, B		Y
gamma-Butyrolactone	A, B	17, 28	Y
Calcium alkaryl sulphonate (C11-C50)	A, B	6	Z
Calcium alkyl (C10-C28) salicylate	A, B	17, 23, 28	Y
Calcium carbonate slurry	A, B	6, 4	OS
Calcium hydroxide slurry	A, B	6, 17, 23, 28	Y
Calcium hypochlorite solution (15% or less)	A, B	17, 28	Y
Calcium lignosulphonate solutions	A, B	23	Z
Calcium long-chain alkyl (C5-C10) phenate	A, B		Y
Calcium long-chain alkyl (C11-C40) phenate	A, B	22	Y
Calcium long-chain alkyl phenate sulphide (C8-C40)	A, B	6, 22	Y
Calcium long-chain alkyl salicylate (C13+)	A, B	22, 23	Y
Calcium long-chain alkyl (C18-C28) salicylate	A, B	22, 23	Y
Calcium nitrate/Magnesium nitrate/Potassium chloride solution	A, B	6, 23	Z
Calcium nitrate solutions (50% or less)	A, B	23	Z
Camelina oil	A, B	22, 32	Y
epsilon-Caprolactam (molten or aqueous solution)	A, B	13, 17, 28	Z
Carbolic oil	A, B	17, 23, 28	Y
Carbon tetrachloride	A, B	5, 17, 28	Y
Cashew nut shell oil (untreated)	A, B	17, 22, 23, 28, 32	Y
Castor oil	A, B	22, 23, 32	Y
Cetyl/Eicosyl methacrylate mixture	A, B	10, 14, 21, 23	Y
Chlorobenzene	A, B	17, 28	Y
Chloroform	A, B	17, 28	Y
Chlorohydrins (crude)	A, B	17, 28	Y
4-Chloro-2-methylphenoxyacetic acid, dimethylamine salt solution	A, B	17, 23, 28	Y
o-Chloronitrobenzene	A, B	17, 22, 23, 28	Y
1-(4-Chlorophenyl)-4,4-dimethyl-pentan-3-one	A, B	22, 23	Y
m-Chlorotoluene	A, B	17, 28	Y
o-Chlorotoluene	A, B		Y
p-Chlorotoluene	A, B	23	Y
Chlorotoluenes (mixed isomers)	A, B		Y
Choline chloride solutions	A, B	6	Z
Citric acid (70% or less)	A, B	17, 28	Z
Clay slurry	A, B	5, 4	OS
Coal slurry	A, B	5, 4	OS

LIST OF PRODUCTS	Conditions of Carriage		Pollution Category
	Products ⁴⁾⁵⁾ *	Tanks / Tank groups	
Coal tar	A, B	17, 22, 23, 28	X
Coal tar naphtha solvent	A, B	17, 23, 28	Y
Cocoa butter	A, B	22, 23, 32	Y
Coconut oil	A, B	22, 23, 32	Y
Coconut oil fatty acid	A, B	22, 23, 32	Y
Coconut oil fatty acid methyl ester	A, B	6	Y
Copper salt of long chain (C17+) alkanolic acid	A, B	22, 23	Y
Corn oil	A, B	22, 23, 32	Y
Cotton seed oil	A, B	22, 23, 32	Y
Creosote (coal tar) (C8-C22, MW 116-278)	A, B	1, 17, 22, 23, 28	X
Cresol/Phenol/Xylenol mixture	A, B	17, 28	Y
Cresylic acid, dephenolized	A, B	17, 28	Y
Cresylic acid, sodium salt solution	A, B	17, 23, 28	Y
1,5,9-Cyclododecatriene	A, B	10, 14, 21	X
Cycloheptane	A, B		X
Cyclohexane	A, B	23	Y
Cyclohexane-1,2 dicarboxylic acid, diisononyl ester	A, B	22	Y
Cyclohexane oxidation products, sodium salts solution	A, B		Z
Cyclohexanol	A, B	23	Y
Cyclohexanone	A, B		Z
Cyclohexanone, Cyclohexanol mixture	A, B		Y
Cyclohexyl acetate	A, B	17, 28	Y
Cyclohexylamine	A, B	17, 28	Y
1,3-Cyclopentadiene dimer (molten)	A, B	17, 22, 23, 28	Y
Cyclopentane	A, B		Y
Cyclopentene	A, B		Y
p-Cymene	A, B		Y
Decahydronaphthalene	A, B	17, 28	Y
Decanoic acid	A, B	17, 23, 28	X
Decene	A, B		X
Decyl alcohol (all isomers)	A, B	19, 23	Y
Decyl/Dodecyl/Tetradecyl alcohol mixture	A, B	17, 23, 28	Y
Decyloxytetrahydrothiophene dioxide	A, B	23	X
Diacetone alcohol	A, B	17, 28	Z
Dialkyl (C8-C9) diphenylamines	A, B		Z
Dialkyl (C7-C13) phthalates	A, B	6, 17, 22, 28	X
Dialkyl (C9-C10) phthalates	A, B	22	Y
Dialkyl thiophosphates sodium salts solution	A, B	17, 23, 28	Y
Dibutylamine	A, B	17, 28	Y

LIST OF PRODUCTS	Conditions of Carriage		Pollution Category
	Products ⁴⁾⁵⁾ *	Tanks / Tank groups	
Dibutyl hydrogen phosphonate	A, B	17, 23, 28	Y
2,6-Di-tert-butylphenol	A, B	23	X
Dibutyl phthalate	A, B	17, 28	X
Dibutyl terephthalate	A, B	6, 23	Y
Dichlorobenzene (all isomers)	A, B	17, 28	X
3,4-Dichloro-1-butene	A, B	17, 28	Y
1,1-Dichloroethane	A, B		Z
Dichloroethyl ether	A, B	17, 28	Y
1,6-Dichlorohexane	A, B		Y
2,2'-Dichloroisopropyl ether	A, B	17, 28	Y
Dichloromethane	A, B	17, 28	Y
2,4-Dichlorophenol	A	11, 15, 17, 22, 23, 28	Y
2,4-Dichlorophenoxyacetic acid, diethanolamine salt solution	A, B	17, 23, 28	Y
2,4-Dichlorophenoxyacetic acid, dimethylamine salt solution (70% or less)	A, B	17, 23, 28	Y
2,4-Dichlorophenoxyacetic acid, triisopropanolamine salt solution	A, B	17, 22, 23, 28	Y
1,1-Dichloropropane	A, B		Y
1,2-Dichloropropane	A, B	17, 28	Y
1,3-Dichloropropene	A, B	17, 28	X
Dichloropropene/Dichloropropane mixtures	A, B	17, 28	X
Dicyclopentadiene, Resin Grade, 81-89%	A, B	12, 14, 17, 28	Y
Diethanolamine	A, B	17, 22, 23, 28	Y
Diethylamine	A, B	17, 28	Y
Diethylaminoethanol	A, B	17, 28	Y
2,6-Diethylaniline	A, B	17, 23, 28	Y
Diethylbenzene	A, B	17, 28	Y
Diethylene glycol	A, B	17, 28	Z
Diethylene glycol dibutyl ether	A, B		Z
Diethylene glycol diethyl ether	A, B	17, 28	Z
Diethylene glycol phthalate	A, B	17, 22, 28	Y
Diethylenetriamine	A, B	17, 28	Y
Diethylenetriaminepentaacetic acid, pentasodium salt solution	A, B		Z
Di-(2-ethylhexyl) adipate	A, B	17, 28	Y
Di-(2-ethylhexyl) phosphoric acid	A, B	17, 28	Y
Diethyl phthalate	A, B		Y
Diethyl sulphate	A, B	17, 28	Y
Diglycidyl ether of bisphenol A	A, B	17, 22, 23, 28	X

LIST OF PRODUCTS	Conditions of Carriage		Pollution Category
	Products ⁴⁾⁵⁾ *	Tanks / Tank groups	
Diglycidyl ether of bisphenol F	A, B	17, 22, 28	Y
Diheptyl phthalate	A, B		Y
Dihexyl phthalate	A, B	17, 28	Y
Diisobutylamine	A, B	17, 28	Y
Diisobutylene	A, B		Y
Diisobutyl ketone	A, B	17, 28	Y
Diisobutyl phthalate	A, B	17, 28	X
Diisononyl adipate	A, B		Y
Diisooctyl phthalate	A, B	6, 22	Y
Diisopropanolamine	A, B	23	Z
Diisopropylamine	A, B	17, 28	Y
Diisopropylbenzene (all isomers)	A, B	17, 28	X
Diisopropylphthalene	A, B	6	Y
N,N-Dimethylacetamide	A, B	17, 28	Z
N,N-Dimethylacetamide solution (40% or less)	A, B	17, 28	Z
Dimethyl adipate	A, B	23	X
Dimethylamine solution (45% or less)	A, B	17, 28	Y
Dimethylamine solution (greater than 45% but not greater than 55%)	A, B	17, 28	Y
N,N-Dimethylcyclohexylamine	A, B	17, 28	Y
Dimethyl disulphide	A, B	17, 28	Y
N,N-Dimethyldodecylamine	A, B	17, 28	Y
Dimethylethanolamine	A, B	17, 28	Y
Dimethylformamide	A, B	17, 28	Y
Dimethyl glutarate	A, B	17, 28	Y
Dimethyl hydrogen phosphite	A, B		Y
Dimethyl octanoic acid	A, B	17, 22, 23, 28	Y
Dimethyl phthalate	A, B	23	Y
Dimethylpolysiloxane	A, B	6	Y
2,2-Dimethylpropane-1,3-diol (molten or solution)	A, B	6, 23	Z
Dimethyl succinate	A, B	23	Y
Dinonyl phthalate	A, B		Y
Diocetyl phthalate	A, B		Y
1,4-Dioxane	A, B	17, 23, 28	Y
Dipentene	A, B	17, 28	Y
Diphenyl	A, B	22, 23	X
Diphenylamine (molten)	A, B	22, 23	Y
Diphenylamine, reaction product with 2,2,4-Trimethylpentene	A, B	22	Y
Diphenylamines, alkylated	A, B	22, 23	Y
Diphenyl/Diphenyl ether mixtures	A, B	23	X

LIST OF PRODUCTS	Conditions of Carriage		Pollution Category
	Tanks / Tank groups	Footnotes	
Products ⁴⁾⁵⁾ *			
Diphenyl ether	A, B	23	X
Diphenyl ether/Diphenyl phenyl ether mixture	A, B	23	X
Diphenylmethane diisocyanate	A	7, 11, 15, 17, 22, 23, 28	Y
Diphenylol propane-epichlorohydrin resins	A, B	17, 22, 23, 28	X
Di-n-propylamine	A, B	17, 28	Y
Dipropylene glycol	A, B		Z
Dithiocarbamate ester (C7-C35)	A, B		X
Ditridecyl adipate	A, B	6, 17, 22, 28	Y
Ditridecyl phthalate	A, B		Y
Diundecyl phthalate	A, B	6, 22, 23	Y
Dodecane (all isomers)	A, B		Y
tert-Dodecanethiol	A, B	17, 28	Y
1-Dodecene	A, B		Y
Dodecene (all isomers)	A, B	17, 28	X
Dodecyl alcohol	A, B	23	Y
Dodecylamine/Tetradecylamine mixture	A, B	17, 23, 28	Y
Dodecylbenzene	A, B	17, 28	Y
Dodecyl diphenyl ether disulphonate solution	A, B	17, 22, 28	X
Dodecyl hydroxypropyl sulphide	A, B		X
Dodecyl methacrylate	A, B	14	Y
Dodecyl/Octadecyl methacrylate mixture	A, B	10, 14, 21, 22	Y
Dodecyl/Pentadecyl methacrylate mixture	A, B	10, 14, 21	Y
Dodecyl phenol	A, B	17, 22, 28	X
Dodecyl Xylene	A, B	22	Y
Drilling brines (containing calcium bromide)	A, B	6	Z
Epichlorohydrin	A, B	17, 28	Y
Ethanolamine	A, B	17, 23, 28	Y
2-Ethoxyethyl acetate	A, B	17, 28	Y
Ethoxylated long chain (C16+) alkyloxyalkylamine	A, B	17, 23, 28	Y
Ethoxylated tallow amine (>95%)	A, B	6, 12, 17, 22, 23, 28	X
Ethyl acetate	A, B		Z
Ethyl acetoacetate	A, B		Z
Ethyl acrylate	A, B	10, 14, 17, 21, 28	Y
Ethyl alcohol	A, B	3	Z
Ethyl amyl ketone	A, B	17, 28	Y
Ethylbenzene	A, B	17, 28	Y
Ethyl tert-butyl ether	A, B	17, 28	Y

LIST OF PRODUCTS	Conditions of Carriage		Pollution Category
	Products ⁴⁾⁵⁾ *	Tanks / Tank groups	
Ethyl butyrate	A, B	17, 28	Y
Ethylcyclohexane	A, B		Y
N-Ethylcyclohexylamine	A, B	17, 28	Y
S-Ethyl dipropylthiocarbamate	A, B	17, 23, 28	Y
Ethylene carbonate	A, B	17, 23, 28	Z
Ethylene cyanohydrin	A, B	17, 28	Y
Ethylenediamine	A, B	17, 23, 28	Y
Ethylenediaminetetraacetic acid, tetrasodium salt solution	A, B	17, 28	Y
Ethylene dichloride	A, B	17, 28	Y
Ethylene glycol	A, B		Z
Ethylene glycol acetate	A, B	17, 28	Y
Ethylene glycol butyl ether acetate	A, B		Y
Ethylene glycol diacetate	A, B		Y
Ethylene glycol methyl ether acetate	A, B	17, 28	Y
Ethylene glycol monoalkyl ethers	A, B	17, 23, 28	Y
Ethylene glycol phenyl ether	A, B	23	Z
Ethylene glycol phenyl ether/Diethylene glycol phenyl ether mixture	A, B	6, 17, 23, 28	Z
Ethylene glycol (>75%)/sodium alkyl carboxylates/borax mixture	A, B	17, 28	Y
Ethylene glycol (>85%)/sodium alkyl carboxylates mixture	A, B		Z
Ethylene-vinyl acetate copolymer (emulsion)	A, B	6, 17, 22, 23, 28	Y
Ethyl-3-ethoxypropionate	A, B		Y
2-Ethylhexanoic acid	A, B	6, 17, 28	Y
2-Ethylhexyl acrylate	A, B	10, 14, 17, 21, 28	Y
2-Ethylhexylamine	A, B	17, 28	Y
2-Ethyl-2-(hydroxymethyl) propane-1,3-diol, (C8-C10) ester	A, B	22, 23	Y
Ethylidene norbornene	A, B	17, 28	Y
Ethyl methacrylate	A, B	10, 14, 21	Y
N-Ethylmethylallylamine	A, B	17, 28	Y
Ethyl propionate	A, B	17, 28	Y
2-Ethyl-3-propylacrolein	A, B	23	Y
Ethyl toluene	A, B		Y
Fatty acid (saturated C13+)	A, B	6, 23	Y
Fatty acid methyl esters (m)	A, B	17, 22, 23, 28	Y
Fatty acids, (C8-C10)	A, B	17, 22, 23, 28	Y
Fatty acids, (C12+)	A, B	22, 23, 32	Y
Fatty acids, (C16+)	A, B	22	Y

LIST OF PRODUCTS	Conditions of Carriage		Pollution Category
	Tanks / Tank groups	Footnotes	
Products ⁴⁾⁵⁾ *			
Fish by-products (fresh) (*)	A, B	1, 3, 6	Z
Fatty acids, essentially linear, (C6-C18) 2-ethylhexyl ester	A, B		Y
Fish oil	A, B	22, 23, 32	Y
Fish silage (containing 3% or less formic acid with antioxidant)	A, B	1, 3, 6	Z
Fish silage protein concentrate (containing 4% or less Formic acid)	A, B	22	Y
Fish protein concentrate (containing 4% or less formic acid)	A, B		Z
Formaldehyde solutions (45% or less)	A, B	17, 23, 28	Y
Formamide	A, B	17, 23, 28	Y
Furfural	A, B	17, 28	Y
Furfuryl alcohol	A, B	17, 28	Y
Glucitol/glycerol blend propoxylated (containing less than 10% amines)	A, B	17, 28	Z
Glucitol/glycerol blend propoxylated (containing 10% or more amines)	A, B	17, 22, 28	Y
Glucose solution	A, B	6, 4	OS
Glutaraldehyde solutions (50% or less)	A, B	17, 28	Y
Glycerine	A, B	23	Z
Glycerol ethoxylated	A, B	4	OS
Glycerol monooleate	A, B	22, 23	Y
Glycerol propoxylated	A, B	17, 28	Z
Glycerol, propoxylated and ethoxylated	A, B		Z
Glycerol/sucrose blend propoxylated and ethoxylated	A, B		Z
Glyceryl triacetate	A, B		Z
Glycidyl ester of C10 trialkylacetic acid	A, B	17, 28	Y
Glycine, sodium salt solution	A, B	6	Z
Glycolic acid solution (70% or less)	A, B	17, 23, 28	Z
Glyoxal solution (40% or less)	A, B	17, 23, 28	Y
Glyphosate solution (not containing surfactant)	A, B	17, 23, 28	Y
Grape seed oil	A, B	22, 32	Y
Groundnut oil	A, B	22, 23, 32	Y
Heptane (all isomers)	A, B		X
n-Heptanoic acid	A, B		Z
Heptanol (all isomers) (d)	A, B	17, 28	Y
Heptene (all isomers)	A, B		Y
Heptyl acetate	A, B	17, 28	Y
1-Hexadecylnaphthalene / 1,4-bis(hexadecyl)naphthalene mixture	A, B	22	Y
1,3,5-Hexahydrotriethanol-1,3,5-triazine solution	A, B	1	Y

LIST OF PRODUCTS	Conditions of Carriage		Pollution Category
	Products ⁴⁾⁵⁾ *	Tanks / Tank groups	
Hexahydro-1,3,5-trimethyl-1,3,5-triazine solution (45% or less)	A, B	1, 17, 28	Y
Hexamethylenediamine (molten)	A, B	17, 23, 28	Y
Hexamethylenediamine adipate (50% in water)	A, B	6	Z
Hexamethylenediamine solution	A, B	17, 28	Y
Hexamethylene diisocyanate	A	7, 11, 15, 17, 28	Y
Hexamethylene glycol	A, B		Z
Hexamethyleneimine	A, B	17, 28	Y
Hexamethylenetetramine solutions	A, B		Z
Hexane (all isomers)	A, B	17, 28	Y
1,6-Hexanediol, distillation overheads	A, B	17, 23, 28	Y
Hexanoic acid	A, B	17, 28	Y
Hexanol	A, B	17, 28	Y
Hexene (all isomers)	A, B		Y
Hexyl acetate	A, B		Y
Hexylene glycol	A, B	17, 28	Z
Hydrocarbon wax	A, B	17, 22, 23, 28	X
Hydrogenated starch hydrolysate	A, B	4	OS
2-Hydroxyethyl acrylate	A, B	10, 14, 17, 21, 28	Y
N-(Hydroxyethyl)ethylenediaminetriacetic acid, trisodium salt solution	A, B	17, 28	Y
2-Hydroxy-4-(methylthio)butanoic acid	A, B	17, 28	Z
Illipe oil	A, B	22, 23, 32	Y
Isoamyl alcohol	A, B	17, 28	Z
Isobutyl alcohol	A, B		Z
Isobutyl formate	A, B		Z
Isobutyl methacrylate	A, B	10, 14, 21	Z
Isophorone	A, B	17, 28	Y
Isophoronediamine	A, B	17, 23, 28	Y
Isophorone diisocyanate	A	7, 11, 15, 17, 28	Y
Isopropanolamine	A, B	22, 23	Y
Isopropyl acetate	A, B		Z
Isopropyl alcohol	A, B	3	Z
Isopropylamine (70% or less) solution	A, B	17, 28	Y
Isopropylcyclohexane	A, B	23	Y
Isopropyl ether	A, B	10, 12, 14, 21	Y
Jatropha oil	A, B	22, 32	Y
Lactic acid	A, B	17, 28	Z
Lard	A, B	22, 23, 32	Y

LIST OF PRODUCTS	Conditions of Carriage		Pollution Category
	Products ⁴⁾⁵⁾ *	Tanks / Tank groups	
Latex, ammonia (1% or less) inhibited	A, B	22, 23	Y
Latex: Carboxylated styrene-Butadiene copolymer; Styrene-Butadiene rubber	A, B	23	Z
Lauric acid	A, B	17, 22, 23, 28	X
Lecithin	A, B	4	OS
Ligninsulphonic acid, magnesium salt solution	A, B		Z
Ligninsulphonic acid, sodium salt solution	A, B	23	Z
Linseed oil	A, B	22, 23	Y
Liquid chemical wastes	A, B	6, 17, 24, 28	X
Long chain alkaryl polyether (C11-C20)	A, B	17, 22, 23, 28	Y
Long-chain alkaryl sulphonic acid (C16-C60)	A, B	6, 17, 23, 28	Y
Long-chain alkylphenate/Phenol sulphide mixture	A, B	17, 22, 23, 28	Y
Long-chain alkylphenol (C14-C18)	A, B	17, 22, 28	Y
Long-chain alkylphenol (C18-C30)	A, B	17, 22, 28	Y
L-Lysine solution (60% or less)	A, B		Z
Magnesium chloride solution	A, B		Z
Magnesium hydroxide slurry	A, B	6, 23	Z
Magnesium long-chain alkaryl sulphonate (C11-C50)	A, B	6, 17, 22, 23, 28	Y
Magnesium long-chain alkyl salicylate (C11+)	A, B	22, 23	Y
Maleic anhydride	A, B	8, 17, 23, 28	Y
Maleic anhydride-sodium allylsulphonate copolymer solution	A, B		Z
Maltitol solution	A, B	4	OS
Mango kernel oil	A, B	22, 23, 32	Y
Mercaptobenzothiazol, sodium salt solution	A, B	23	X
Mesityl oxide	A, B	17, 28	Z
Metam sodium solution	A, B	17, 28	X
Methacrylic acid	A, B	14, 17, 21, 23, 28	Y
Methacrylic acid - alkoxy poly (alkylene oxide) methacrylate copolymer, sodium salt aqueous solution (45% or less)	A, B	23	Z
Methacrylic resin in ethylene dichloride	A, B	17, 23, 28	Y
Methacrylonitrile	A, B	14, 17, 28	Y
3-Methoxy-1-butanol	A, B		Z
3-Methoxybutyl acetate	A, B		Y
Methyl acetate	A, B		Z
Methyl acetoacetate	A, B	17, 28	Z
Methyl acrylate	A, B	10, 14, 17, 21, 28	Y
Methyl alcohol	A, B	17, 28	Y

LIST OF PRODUCTS	Conditions of Carriage		Pollution Category
	Products ⁴⁾⁵⁾ *	Tanks / Tank groups	
Methylamine solutions (42% or less)	A, B	17, 28	Y
Methylamyl acetate	A, B		Y
Methylamyl alcohol	A, B	17, 28	Z
Methyl amyl ketone	A, B		Z
N-Methylaniline	A, B	17, 28	Y
alpha-Methylbenzyl alcohol with acetophenone (15% or less)	A, B	17, 22, 23, 28	Y
Methylbutenol	A, B	17, 23, 28	Y
Methyl tert-butyl ether	A, B		Z
Methyl butyl ketone	A, B	17, 28	Y
Methylbutynol	A, B		Z
Methyl butyrate	A, B	17, 28	Y
Methylcyclohexane	A, B		Y
Methylcyclopentadiene dimer	A, B	17, 28	Y
Methylcyclopentadienyl manganese tricarbonyl	A, B	17, 23, 28	X
Methyl diethanolamine	A, B	17, 22, 28	Y
2-Methyl-6-ethyl aniline	A, B	17, 28	Y
Methyl ethyl ketone	A, B		Z
2-Methyl-5-ethyl pyridine	A, B	17, 28	Y
2-Methylglutaronitrile with 2-Ethylsuccinonitrile (12% or less)	A, B	17, 28	Z
2-Methyl-2-hydroxy-3-butyne	A, B	23	Z
Methyl isobutyl ketone	A, B	17, 28	Z
Methyl methacrylate	A, B	10, 14, 21	Y
3-Methyl-3-methoxybutanol	A, B	6, 17, 28	Z
Methyl naphthalene (molten)	A, B	17, 28	X
N-Methylglucamine solution (70% or less)	A, B	17, 23, 28	Z
2-Methyl-1,3-propanediol	A, B		Z
2-Methylpyridine	A, B	17	Z
3-Methylpyridine	A, B	17, 28	Z
4-Methylpyridine	A, B	17, 23, 28	Z
N-Methyl-2-pyrrolidone	A, B	17, 28	Y
Methyl propyl ketone	A, B	17, 28	Z
Methyl salicylate	A, B	17, 28	Y
alpha-Methylstyrene	A, B	10, 14, 17, 21, 26, 28	Y
3-(methylthio)propionaldehyde	A, B	17, 28	Y
Microsilica slurry	A, B	4	OS
Molasses	A, B	6, 4	OS
Molybdenum polysulfide long chain alkyl dithiocarbamide complex	A, B	17, 22, 23, 28	Y
Morpholine	A, B	17, 28	Y
Myrcene	A, B	17, 23, 28	X

LIST OF PRODUCTS	Conditions of Carriage		Pollution Category
	Products ⁴⁾⁵⁾ *	Tanks / Tank groups	
Naphthalenesulphonic acid-Formaldehyde copolymer, sodium salt solution	A, B	6, 23	Z
Neodecanoic acid	A, B	17, 28	Y
Nitrilotriacetic acid, trisodium salt solution	A, B	17, 28	Y
Nitrobenzene	A, B	17, 23, 28	Y
Nitroethane	A, B	9, 10, 17, 21, 28	Y
Nitroethane(80%)/Nitropropane(20%)	A, B	9, 10, 17, 21, 28	Y
Nitroethane, 1-Nitropropane (each 15% or more) mixture	A, B	9, 10, 17, 21, 22, 28	Y
o-Nitrophenol (molten)	A, B	22, 23	Y
1- or 2-Nitropropane	A, B	17, 28	Y
Nitropropane (60%)/Nitroethane (40%) mixture	A, B	9, 17, 28	Y
o- or p-Nitrotoluenes	A, B	17, 28	Y
Nonane (all isomers)	A, B		X
Nonanoic acid (all isomers)	A, B	17, 23, 28	Y
Non-edible industrial grade palm oil	A, B	17, 22, 23, 28, 32	Y
Nonene (all isomers)	A, B		Y
Nonyl alcohol (all isomers)	A, B	17, 28	Y
Nonyl methacrylate monomer	A, B	6, 23	Y
Nonylphenol poly(4+)ethoxylate	A, B	17, 22, 28	Y
Noxious liquid, N.F, (3) n.o.s.(trade name..., contains...) S.T.2, Cat.X.	A, B	6, 22	X
Noxious liquid, F, (4) n.o.s. (trade name..., contains...) S.T.2, Cat.X.	A, B	6, 22	X
Noxious liquid, N.F, (5) n.o.s. (trade name..., contains...) S.T.2, Cat.Y.	A, B	6, 22, 23	Y
Noxious liquid, F, (6) n.o.s. (trade name..., contains...) S.T.2, Cat.Y	A, B	6, 22, 23	Y
Noxious liquid, N.F, (7) n.o.s. (trade name..., contains...) S.T.3, Cat.Y	A, B	6, 22, 23	Y
Noxious liquid, F, (8) n.o.s. (trade name..., contains...) S.T.3, Cat.Y	A, B	6, 22, 23	Y
Noxious liquid, N.F, (9) n.o.s. (trade name..., contains...) S.T.3, Cat.Z	A, B	6	Z
Noxious liquid, F, (10) n.o.s. (trade name..., contains...) S.T.3, Cat.Z	A, B	6	Z
Noxious liquid, (11) n.o.s. (trade name..., contains...) Cat.Z	A, B	3, 6	Z
Non-noxious liquid, (12) n.o.s. (trade name..., contains...) Cat. OS	A, B	6, 4	OS
Octamethylcyclotetrasiloxane	A, B	23	Y
Octane (all isomers)	A, B		X
Octanoic acid (all isomers)	A, B	17, 28	Y

LIST OF PRODUCTS	Conditions of Carriage		Pollution Category
	Tanks / Tank groups	Footnotes	
Products ⁴⁾⁵⁾ *			
Octanol (all isomers)	A, B	17, 28	Y
Octene (all isomers)	A, B		Y
n-Octyl acetate	A, B	23	Y
Octyl aldehydes	A, B	23	Y
Octyl decyl adipate	A, B	23	Y
Olefin-Alkyl ester copolymer (molecular weight 2000+)	A, B	6, 22, 23	Y
Olefin mixture (C7-C9) C8 rich, stabilized	A, B	14	X
Olefin mixtures (C5-C7)	A, B		Y
Olefin mixtures (C5-C15)	A, B	17, 28	X
Olefins (C13+, all isomers)	A, B	6, 23	Y
alpha-Olefins (C6-C18) mixtures	A, B	6, 17, 23, 28	X
Oleic acid	A, B	17, 23, 28	Y
Oleylamine	A, B	17, 23, 28	X
Olive oil	A, B	22, 23, 32	Y
Oxygenated aliphatic hydrocarbon mixture	A, B		Z
Palm acid oil	A, B	22, 23, 32	Y
Palm fatty acid distillate	A, B	22, 23, 32	Y
Palm kernel acid oil	A, B	17, 22, 23, 28, 32	Y
Palm kernel fatty acid distillate	A, B	17, 22, 23, 28, 32	Y
Palm kernel oil	A, B	22, 23, 32	Y
Palm kernel olein	A, B	22, 23, 32	Y
Palm kernel stearin	A, B	22, 23, 32	Y
Palm mid-fraction	A, B	22, 23, 32	Y
Palm oil	A, B	22, 23, 32	Y
Palm oil fatty acid methyl ester	A, B	23	Y
Palm olein	A, B	22, 23, 32	Y
Palm stearin	A, B	22, 23, 32	Y
Paraffin wax, highly-refined	A, B	22, 23, 32	Y
Paraffin wax, semi-refined	A, B	17, 22, 23, 28	X
Paraldehyde	A, B	23	Z
Paraldehyde-ammonia reaction product	A, B	17, 28	Y
Pentachloroethane	A, B	5, 17, 28	Y
1,3-Pentadiene	A, B	10, 14, 21	Y
1,3-Pentadiene (greater than 50%) cyclopentene and isomers, mixtures	A, B	12, 14, 17, 28	Y
Pentane (all isomers)	A, B	16, 25, 29	Y
Pentaethylenehexamine	A, B	6, 17, 28	X
Pentanoic acid	A, B	17, 28	Y
n-Pentyl propionate	A, B	17, 28	Y
Perchloroethylene	A, B	5, 17, 28	Y

LIST OF PRODUCTS	Conditions of Carriage		Pollution Category
	Products ^{4)5) *}	Tanks / Tank groups	
Phenol	A, B	17, 23, 28	Y
1-Phenyl-1-xylyl ethane	A, B		Y
Phosphate esters, alkyl (C12-C14) amine	A, B	17, 22, 23, 28	Y
[[[(Phosphonomethyl)imino]bis[ethylenenitrilobis(methylene)]]tetrakisphosphonic acid, ammonium salt solution (60% or less)	A, B	1, 6	Y
alpha-Pinene	A, B		X
beta-Pinene	A, B		X
Pine oil	A, B	22, 23	X
Piperazine, 68% solution	A, B	17, 22, 23, 28	Y
Polyacrylic acid solution (40% or less)	A, B		Z
Polyalkyl (C18-C22) acrylate in xylene	A, B	17, 22, 23, 28	Y
Polyalkylalkenaminesuccinimide, molybdenum oxysulphide	A, B	22	Y
Poly(2-8)alkylene glycol monoalkyl (C1-C6) ether	A, B		Z
Poly(2-8)alkylene glycol monoalkyl (C1-C6) ether acetate	A, B	6	Y
Polyalkyl (C10-C20) methacrylate	A, B	22, 23	Y
Polyalkyl (C10-C18) methacrylate/ethylene-propylene copolymer mixture	A, B	22, 23	Y
Polyaluminium chloride solution	A, B	6	Z
Polybutene	A, B	22	Y
Polybutenyl succinimide	A, B	22, 23	Y
Polyether (molecular weight 1350+)	A, B	6, 22	Y
Polyethylene glycol	A, B		Z
Polyethylene glycol dimethyl ether	A, B	6	Z
Poly(ethylene glycol) methylbutenyl ether (MW>1000)	A, B	23	Z
Polyethylene polyamines	A, B	17, 22, 23, 28	Y
Polyethylene polyamines (more than 50% C5-C20 paraffin oil)	A, B	17, 23, 28	Y
Polyferric sulphate solution	A, B	17, 28	Y
Poly(iminoethylene)-graft-N-poly(ethyleneoxy) solution (90% or less)	A, B	23	Z
Polyisobutenamine in aliphatic (C10-C14) solvent	A, B	17, 28	Y
(Polyisobutene) amino products in aliphatic hydrocarbons	A, B	22	Y
Polyisobutenyl anhydride adduct	A, B		Z
Poly(4+)isobutylene (MW >224)	A, B	6, 22, 23	X
Polyisobutylene (MW ≤ 224)	A, B	6, 23	Y

LIST OF PRODUCTS	Conditions of Carriage		Pollution Category
	Tanks / Tank groups	Footnotes	
Products ⁴⁾⁵⁾ *			
Polyglycerine, sodium salt solution (containing less than 3% sodium hydroxide)	A, B	17, 23, 28	Z
Polymethylene polyphenyl isocyanate	A	7, 11, 15, 17, 23, 28	Y
Polyolefin (molecular weight 300+)	A, B	6, 22, 23	Y
Polyolefin amide alkeneamine (C17+)	A, B	22	Y
Polyolefin amide alkeneamine borate (C28-C250)	A, B	6, 22, 23	Y
Polyolefin amide alkeneamine polyol	A, B	22, 23	Y
Polyolefinamine (C28-C250)	A, B	17, 23, 28	Y
Polyolefinamine in alkyl (C2-C4) benzenes	A, B	6, 17, 22, 23, 28	Y
Polyolefinamine in aromatic solvent	A, B	6, 17, 22, 23, 28	Y
Polyolefin aminoester salts (mw 2000+)	A, B	22, 23	Y
Polyolefin anhydride	A, B	17, 22, 23, 28	Y
Polyolefin ester (C28-C250)	A, B	6, 22, 23	Y
Polyolefin phenolic amine (C28-C250)	A, B	6, 22, 23	Y
Polyolefin phosphorusulphide, barium derivative (C28-C250)	A, B	22, 23	Y
Poly(20)oxyethylene sorbitan monooleate	A, B	22, 23	Y
Poly(5+)propylene	A, B	6, 23	Y
Polypropylene glycol	A, B		Z
Polysiloxane	A, B	6, 23	Y
Potassium chloride solution	A, B	23	Z
Potassium chloride solution (less than 26%)	A, B	4	OS
Potassium formate solutions(*)	A, B	5	Z
Potassium hydroxide solution(*)	A, B	17	Y
Potassium oleate	A, B	22, 23	Y
Potassium thiosulphate (50% or less)	A, B	17, 23, 28	Y
n-Propanolamine	A, B	17, 23, 28	Y
2-Propene-1-aminium, N,N-dimethyl-N-2-propenyl-, chloride, homopolymer solution	A, B		Y
Propionaldehyde	A, B	12	Y
Propionic anhydride	A, B	17, 28	Y
n-Propyl acetate	A, B		Y
n-propyl alcohol	A, B	17, 28	Y
n-Propylamine	A, B	12, 17, 28	Z
Propylbenzene (all isomers)	A, B		Y
Propylene carbonate	A, B	17, 28	Z
Propylene glycol	A, B	3	Z
Propylene glycol methyl ether acetate	A, B		Z
Propylene glycol monoalkyl ether	A, B	6	Z

LIST OF PRODUCTS	Conditions of Carriage		Pollution Category
	Products ⁴⁾⁵⁾ *	Tanks / Tank groups	
Propylene glycol phenyl ether	A, B		Z
Propylene tetramer	A, B		X
Propylene trimer	A, B		Y
Pyridine	A, B	17, 28	Y
Pyrolysis gasoline (containing benzene)	A, B	17, 28	Y
Rapeseed oil	A, B	22, 23, 32	Y
Rapeseed oil (low erucic acid containing less than 4% free fatty acids)	A, B	22, 23, 32	Y
Rape seed oil fatty acid methyl esters	A, B		Y
Resin oil, distilled	A, B	17, 28	Y
Rice bran oil	A, B	22, 23, 32	Y
Safflower oil	A, B	22, 23, 32	Y
Shea butter	A, B	22, 23, 32	Y
Sodium acetate solutions	A, B	3, 6	Z
Sodium alkyl (C14-C17) sulphonates (60-65% solution)	A, B	17, 22, 23, 28	Y
Sodium aluminosilicate slurry	A, B	6, 23	Z
Sodium benzoate	A, B	6, 23	Z
Sodium bicarbonate solution (less than 10%)	A, B	6, 4	OS
Sodium borohydride (15% or less)/Sodium hydroxide solution (*)	A, B	22, 23	Y
Sodium bromide solution (less than 50%) (*)	A, B	6	Y
Sodium carbonate solution (*)	A, B	6	Z
Sodium chlorate solution (50% or less) (*)	A, B	17, 23	Z
Sodium hydrogen sulphide (6% or less)/Sodium carbonate (3% or less) solution	A, B	23	Z
Sodium hydrogen sulphite solution (45% or less)	A, B	23	Z
Sodium hydrosulphide solution (45% or less)(*)	A, B	14, 17, 20, 23, 28	Z
Sodium hydroxide solution(*)	A, B	22, 23	Y
Sodium hypochlorite solution (15% or less)	A, B		Y
Sodium methylate 21-30% in methanol	A, B	17, 22, 23, 28, 30	Y
Sodium nitrite solution	A, B	17, 22, 23, 28	Y
Sodium petroleum sulphonate	A, B	17, 22, 28	Y
Sodium poly(4+)acrylate solutions	A, B	6, 23	Z
Sodium silicate solution	A, B	5, 17, 23, 28	Y
Sodium sulphate solutions	A, B	6, 23	Z
Sodium sulphide solution (15% or less)	A, B	17, 23, 28	Y
Sodium sulphite solution (25% or less)	A, B	23	Y
Sodium thiocyanate solution (56% or less)	A, B	6, 23	Y
Sorbitol solution	A, B	4	OS
Soyabean oil	A, B	22, 23, 32	Y

LIST OF PRODUCTS	Conditions of Carriage		Pollution Category
	Products ^{4)5) *}	Tanks / Tank groups	
Soybean Oil Fatty Acid Methyl Ester	A, B	23	Y
Styrene monomer	A, B	10, 14, 17, 21, 28	Y
Sulphohydrocarbon (C3-C88)	A, B	6, 22, 23	Y
Sulpholane	A, B	23	Y
Sulphonated polyacrylate solution	A, B	3	Z
Sulphurized fat (C14-C20)	A, B		Z
Sulphurized polyolefinamide alkene (C28-C250) amine	A, B		Z
Sunflower seed oil	A, B	22, 23, 32	Y
Tall oil, crude	A, B	22	Y
Tall oil, distilled	A, B	22	Y
Tall oil fatty acid (resin acids less than 20%)	A, B		Y
Tall oil pitch	A, B	22, 23	Y
Tall oil soap, crude	A, B	17, 22, 28	Y
Tallow	A, B	22, 23, 32	Y
Tallow fatty acid	A, B	6, 22, 23, 32	Y
Tetrachloroethane	A, B	5, 17, 28	Y
Tetraethylene glycol	A, B		Z
Tetraethylene pentamine	A, B	17, 28	Y
Tetraethyl silicate monomer/oligomer (20% in ethanol)	A, B	3	Z
Tetrahydrofuran	A, B		Z
Tetrahydronaphthalene	A, B	17, 28	Y
Tetramethylbenzene (all isomers)	A, B	23	X
Toluene	A, B	17, 28	Y
Toluenediamine	A, B	13, 17, 22, 23, 27, 28	Y
Toluene diisocyanate	A	7, 11, 15, 17, 23, 28	Y
o-Toluidine	A, B	17, 28	Y
Tributyl phosphate	A, B	17, 28	Y
1,2,3-Trichlorobenzene (molten)	A, B	17, 22, 23, 28	X
1,1,1-Trichloroethane	A, B		Y
1,1,2-Trichloroethane	A, B		Y
Trichloroethylene	A, B	17, 28	Y
1,2,3-Trichloropropane	A, B	17, 28	Y
1,1,2-Trichloro-1,2,2-Trifluoroethane	A, B		Y
Tricresyl phosphate (containing 1% or more ortho-isomer)	A, B	17, 22, 28	Y
Tricresyl phosphate (containing less than 1% ortho-isomer)	A, B	17, 22, 28	Y
Tridecane	A, B		Y

LIST OF PRODUCTS	Conditions of Carriage		Pollution Category
	Tanks / Tank groups	Footnotes	
Products ⁴⁾⁵⁾ *			
Tridecanoic acid	A, B	22, 23	Y
Tridecyl acetate	A, B	17, 28	Y
Triethanolamine	A, B	17, 23, 28	Z
Triethylamine	A, B	17, 28	Y
Triethylbenzene	A, B	17, 28	X
Triethylene glycol	A, B	3	Z
Triethylenetetramine	A, B	17, 23, 28	Y
Triethyl phosphate	A, B		Z
Triethyl phosphite	A, B	17, 23, 28	Z
Triisopropanolamine	A, B	23	Z
Triisopropylated phenyl phosphates	A, B	22	X
Trimethylbenzene (all isomers)	A, B		X
Trimethylol propane propoxylated	A, B		Z
2,2,4-Trimethyl-1,3-pentanediol diisobutyrate	A, B		Y
2,2,4-Trimethyl-1,3-pentanediol-1-isobutyrate	A, B		Y
1,3,5-Trioxane	A, B	17, 23, 28	Y
Tripropylene glycol	A, B		Z
Tung oil	A, B	22, 23, 32	Y
Turpentine	A, B	28	X
Undecanoic acid	A, B	17, 22, 23, 28	Y
1-Undecene	A, B		X
Undecyl alcohol	A, B	17, 23, 28	X
Urea/Ammonium nitrate solution	A, B		Y
Urea/Ammonium phosphate solution	A, B	6, 17, 28	Y
Urea solution	A, B	23	Z
Used cooking oil (m)	A, B	6, 22, 23	X
Used cooking oil (triglycerides, C16-C18 and C18 unsaturated)* (m) (n)	A, B	22, 23, 31, 32	Y
Valeraldehyde (all isomers)	A, B	10, 12, 14, 21	Y
Vegetable acid oils (m)	A, B	22, 23, 32	Y
Vegetable fatty acid distillates (m)	A, B	22, 23, 32	Y
Vegetable oil mixtures, containing less than 15% free fatty acid (m)	A, B	6, 22, 23, 32	Y
Vegetable protein solution (hydrolysed)	A, B	4	OS
Vinyl acetate	A, B	10, 14, 17, 21, 28	Y
Vinyl neodecanoate	A, B	10, 14, 17, 21, 28	Y
Vinyltoluene	A, B	10, 14, 17, 21, 28	Y
Water	A, B	4	OS
White spirit, low (15-20%) aromatic	A, B	17, 23, 28	Y

LIST OF PRODUCTS	Conditions of Carriage		Pollution Category
	Products ^{4)5) *}	Tanks / Tank groups	
Wood lignin with sodium acetate/oxalate	A, B		Z
Xylenes	A, B	23	Y
Xylenes/ethylbenzene (10% or more) mixture	A, B	17, 28	Y
Xylenol	A, B	17, 23, 28	Y
Zinc alkaryl dithiophosphate (C7-C16)	A, B	22, 23	Y
Zinc alkenyl carboxamide	A, B	22	Y
Zinc alkyl dithiophosphate (C3-C14)	A, B	22	Y

Footnotes

Note No.	Note
1	This product is not yet formally included in the Code / MARPOL Annex II or the carriage permission is based on a provisional assessment of the pollution and / or safety hazards. The inclusion of this product is based on information given in document: MEPC.2/Circ.25 Annex 1
3	"Chapter 18 / Category Z" product. (I.e. this product is not subject to the Code's requirements and it is included in this list only due to its pollution properties. Reference is made to Footnote 4 on the Certificate of Fitness. Possible Class / SOLAS requirements regarding electrical equipment in gas dangerous areas and fire fighting measures must, however, be observed.)
4	"Chapter 18 / OS (Other Substance)" product. (I.e. this product is neither subject to the Code's nor to MARPOL Annex II's requirements and it is included in this list for information purposes only. Possible Class / SOLAS requirements regarding electrical equipment in gas dangerous areas and fire fighting measures must, however, be observed.)
5	Loading restrictions due to actual cargo density and/or cargo tank density limitations may apply to one or more tank groups. Refer to cargo shipping documents for actual cargo density.
6	The density of this product has not been considered when assigning tank groups. Refer to cargo shipping documents for actual cargo density.
7	Although water is suitable for extinguishing open air fires involving chemicals to which this footnote applies, water shall not be allowed to contaminate closed tanks containing these chemicals because of the risk of hazardous gas generation.
8	Dry chemical fire fighting medium cannot be used because of the possibility of an explosion.
9	Dry chemical shall not be used as a fire fighting medium.
10	Heating coils (or deck cargo heaters) in tanks carrying this product shall be blanked off or secured by equivalent means.
11	This product shall be carried under a "dry" cargo tank environmental condition in accordance with IBC Code Chapter 9.
12	This product shall be carried under an "inerted" cargo tank environmental condition in accordance with IBC Code Chapter 9.
13	Sufficient heating capacity for the carriage of this product has not been verified by DNV GL.
14	Care must be taken to ensure that this product is sufficiently inhibited to prevent polymerization at all times during the voyage.
15	This product shall neither be carried in cargo tanks adjacent to tanks containing ballast, slops or cargo containing water which may react in a dangerous manner, nor adjacent to permanent ballast tanks or water tanks unless these tanks are empty and dry. Water or steam shall not be used as heat transfer medium in cargo tank heating coils (or deck cargo heaters) when carrying this product. Any heating coils are to be empty and dry and are to be blanked off or secured by equivalent means or are to be filled with a heat transfer media, other than water/steam, compatible with the product. The operational provisions of para 15.16 of the IBC-Code are to be observed.
16	When this product is carried, the tank shall be fitted with a pressure gauge indicating the pressure in the vapour space above the cargo.
17	When carrying this product in tanks without inherent separate cargo piping and vent systems, separation must be ensured by removing spool pieces etc. as described in Ch.3.1.4 of the IBC Code. Such means for obtaining the separation are not acceptable if located within the cargo tanks. Alternatively it must be ensured that all tanks / compartments connected to systems not so separated are only loaded with the same product.

Note No.	Note
18	The carriage temperature of this product shall be maintained below 100 deg. C to prevent the occurrence of a self-sustaining exothermic decomposition reaction.
19	Reference to item 16.2.9 in the IBC Code applies to n-decylalcohol only.
20	When this product is carried provisions shall be made to maintain the inert gas pad in the cargo tank during loading, unloading and transit.
21	This product shall not be carried adjacent to a cargo or fuel oil tank being excessively heated.
22	The cargo's viscosity at 20 deg C shall be specified on a shipping document and if exceeding 50 mPa.s at 20 deg C, the temperature at which the cargo has a viscosity of 50 mPa.s shall be specified in the shipping document.
23	The cargo's melting point shall be indicated in the shipping document.
24	Ships carrying liquid chemical wastes shall, in addition to the documentation specified in item 16.2 of the IBC Chem Code, carry onboard a waste movement document issued by the competent authority of the country of origin (of the waste).
25	The maximum tank filling for this product shall be according to an approved filling limit curve.
26	Before loading alpha-Methylstyrene it must be documented that the foam in the deck fire fighting system is effective for this product or alternatively at least 2 off portable 25 kg dry powder fire extinguishers ready for use shall be placed near the cargo manifold during loading / unloading.
27	This entry applies to 93% or less aqueous solution only.
28	When carrying this product it is required that the ship is provided with equipment and consumables for testing for presence of toxic cargo vapours. In case suitable toxic vapour detection equipment is not available the requirements in the IBC Code item 13.2.3 must be adhered to. Ref. Code items 14.2.4 and 16.4.2.2.
29	The carriage of this product is restricted to transport in Northern- and West-European waters. No seasonal restrictions apply. The Master is to consider the expected ambient temperatures to ensure that the cargo will not reach the reference temperature (R).
30	Reference to item 16.2.6 in the IBC Code applies for concentrations above 28% of sodium methylate.
31	If this entry for Used cooking oil is used, then confirmation that the product is composed of Triglycerides, C16-C18 and C18 unsaturated shall be required. Otherwise, the more generic entry for Used cooking oil must be used.
32	This product is considered a persistent floater under regulation 13.7.1.4 of MARPOL Annex II and special prewash requirements applies in the areas defined in regulation 13.9 of MARPOL Annex II.

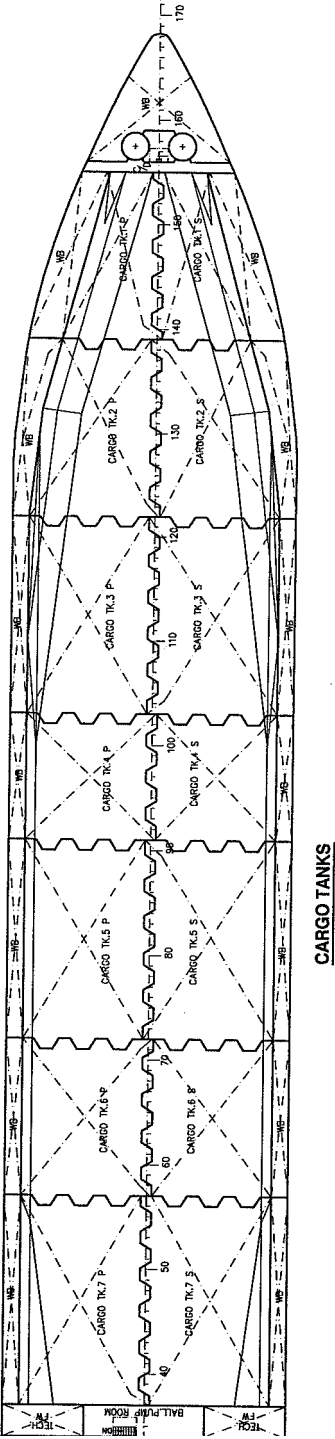
Note No.	Note
	GENERAL NOTES
G.N.	The suitability of the materials of construction, coatings or linings for the various products has not been considered when producing this "List of Products". - The Manager / Owner is responsible for the ship being provided with compatibility information for such materials. - The "Shipper" is responsible for providing relevant compatibility information for the cargoes. - The Master is responsible for ensuring that cargoes unsuitable for the ship / the tank are not carried. Reference is made to the IBC Code Chapter 6.
G.N.	This LIST OF PRODUCTS has been produced taking fully into account all amendments to the Code up to and including the "REVISED Annex II" and the "2019 Amendments to the IBC Code" with entry into force 1 January 2021.
G.N.	Each pair of cargo tanks only to be loaded with the same product.
G.N.	Cargoes, residues of cargoes or mixtures containing cargoes, which react in a hazardous manner with other cargoes, residues or mixtures, shall be segregated from such other cargoes with respect to stowage and pipe separation. Ref. IBC Code item 3.1.3.
G.N.	Unless otherwise required by the Code the tanks may be filled up to 98% of their capacity, however, the cargo tanks are to be filled to such a level only that at the maximum temperature expected during transport sufficient expansion space is left. The following cargo density limitations apply: Tank Group A: 1.54t/m ³ @ 98%; 1.71t/m ³ for partial filling; P/V Valve setting 0.2 Bar Tank Group B: 1.54t/m ³ @ 98%; 1.71t/m ³ for partial filling; P/V Valve setting 0.2 Bar

Tanks/tank groups

TANK GROUPS

Tank group name	Tank name/Tank identification
A	CT 1P CT 1S CT 2P CT 2S CT 3P CT 3S CT 4P CT 4S CT 5P CT 5S CT 6P CT 6S
B	CT 7P CT 7S

TANK PLAN



CERTIFICATE OF FITNESS FOR THE CARRIAGE OF DANGEROUS CHEMICALS IN BULK

Addendum for "Trade Named" Products from Annex 3 of MEPC.2/Circ.

This LIST OF "TRADE NAMED" PRODUCTS consisting of 10 pages is issued as an addendum to the Certificate of Fitness.

With reference to paragraph 4 of the above mentioned Certificate it is confirmed that the ship meets the requirements for the carriage in bulk of the following products provided that all relevant operational provisions of the Code, and MARPOL Annex II are observed:

Prepared at **Høvik, Norway** on **2020-06-22** by **Mojca Kovacic Dadic, Senior Engineer**.

LIST OF "TRADE NAMED" PRODUCTS	Conditions of Carriage		Pollution Category
	Tanks / Tank groups	Footnotes	
Products 4)5) *			
10% Scaletreat 8199C in 6% NaCl (Contains: Phosphoric acid and Ethanolamine)	A, B	2	Z
30-50% Scaletreat SD 12154 in 3% KCl (Contains: Potassium hydroxide)	A, B	2, 23	Z
ACPC26004A (Contains: Naphthalene (molten); Alkyl (C5-C8) benzenes)	A, B	2, 17, 28	Y
Alcoa CARP (Contains: Sodium aluminate)	A, B	2, 5, 17, 28	Y
AMINE DCT (Contains: Triethylenetetramine/2-piperazine-1-ylethylamine mixtures)	A, B	2, 17, 28	Y
AP 13168 (Contains: Polyolefin amide alkeneamine (C17+); Zinc alkyl dithiophosphate (C3-C14) and mineral oil)	A, B	2, 22	Y
AP 13246 (Contains: Calcium alkaryl sulphonate (C11-C50), Zinc alkyl dithiophosphate (C3-C14), and Mineral oil)	A, B	2, 22	Y
AP13275 (Contains: Polyolefin amide alkeneamine (C17+); Zinc alkyl dithiophosphate (C3-C14) and mineral oil)	A, B	2, 22	Y
BK Gasoline (Contains: Benzene and 1,3-Cyclopentadiene dimer (molten))	A, B	2, 17, 28	Y
BK Reformed/Platformed Gasoline (Contains: 1,3-Cyclopentadiene dimer (molten) and styrene)	A, B	2, 17, 28	Y
CA 354 (Contains: Alkyl (C18-C28) toluene sulphonic acid, calcium salts, high overbase; Zinc alkyl dithiophosphate (C3-C14) and mineral oil)	A, B	2, 22	Y
Caromax 20 (Contains: Alkyl (C3-C4) benzenes and Naphthalene)	A, B	2, 17, 28	Y

* Refers to footnotes in the Certificate of Fitness



LIST OF "TRADE NAMED" PRODUCTS	Conditions of Carriage		Pollution Category
	Products ^{4)5) *}	Tanks / Tank groups	
Caromax 20/45 (Contains: Alkyl (C3-C4) benzenes and Naphthalene)	A, B	2, 17, 28	Y
Caromax 26 (Contains: Methyl naphthalene and Poly(2+)cyclic aromatics)	A, B	2, 17, 28	X
Caromax 28 (Contains: Methyl naphthalene and Poly(2+)cyclic aromatics)	A, B	2, 17, 28	X
CAS 29/75 (Contains: Methyl naphthalene and Poly(2+)cyclic aromatics)	A, B	2, 17, 28	X
Clairsol 350MHF (Contains: n-Alkanes (C10+))	A, B	2	Y
Clairsol CT-NA (Contains: n-Alkanes (C10+))	A, B	2	Y
Clairsol NS (Contains: n-Alkanes (C10+))	A, B	2	Y
CM-9824 (Contains: Sodium hydroxide solution)	A, B	2	Z
CORR10003A (Contains: Triethylene glycol)	A, B	2	Z
CORR11610SP (Contains: Ethylene glycol monoalkyl ethers)	A, B	2, 17, 28	Y
CORR11645A (Contains: Alkyl (C5-C8) benzenes; Tall oil acids/linoleic acid dimer/polyalkylenepolyamines/dodecylbenzenes sulphonic acid complexes in naphtha/isopropanol)	A, B	2, 17, 28	Y
CORR18925A (Contains: Naphthalene and Alkyl (C5-C8) benzenes)	A, B	2, 17, 28	Y
CS 1500E (Contains: Polyalkene sulphonic acid (C23-C28), sodium salt)	A, B	2, 17, 22, 23, 28	Y
CTC Crude Type A (Contains: Carbon Tetrachloride)	A, B	2, 5, 17, 28	Y
D-Crude CTC (Contains: Carbon Tetrachloride)	A, B	2, 17, 28	Y
Eastman VersaMax (Contains: Bis(2-ethylhexyl) terephthalate)	A, B	2, 22, 23	Y
EC1645A (Contains: Alkyl (C5-C8) benzenes; Tall oil acids/linoleic acid dimer polyalkylenepolyamines/dodecylbenzenesulphonic acid complexes in naphtha/isopropanol)	A, B	2, 17, 28	Y
EC6004A (Contains: Naphthalene (molten); Alkyl (C5-C8) benzenes)	A, B	2, 17, 28	Y
EC6671A (Contains: Methyl alcohol; Poly nalkylmethacrylamide ammonium acrylate copolymer (20% solution in DEGME))	A, B	2, 17, 28	Y
EEHC1 (Contains: Triethylene glycol)	A, B	2	Z
EMBR18636A (Contains: Octanol (all isomers))	A, B	2	Y
EMBR18636F3 (Contains: Octanol (all isomers))	A, B	2, 6	Y
Emulsotron X-8636 (Contains: Octanol (all isomers))	A, B	2	Y
ENORDET O332 (Contains: Sodium alkyl (C14-C17) sulphonates (60-65% solution))	A, B	2, 6, 17, 22, 28	Y
Ethylol 75 (Contains: Ethyl alcohol and Isopropyl ether)	A, B	2	Y
Fraction C6 (Contains: Benzene)	A, B	2, 17, 28	Y

LIST OF "TRADE NAMED" PRODUCTS	Conditions of Carriage		Pollution Category
	Tanks / Tank groups	Footnotes	
Products ⁴⁾⁵⁾ *			
Fraction C7 (Contains: Toluene)	A, B	2, 17, 28	Y
Fraction TX (Contains: Toluene)	A, B	2, 17, 28	Y
Fuerza Combustible (Contains: Methyl alcohol; Octane)	A, B	2, 17, 28	Y
FX2886 (Contains: Naphthalene (molten); Alkyl (C5-C8) benzenes)	A, B	2, 17, 28	Y
GT-7538 (Contains: Diethanolamine)	A, B	2, 17, 28	Y
GT-7599 (Contains: Diethanolamine)	A, B	2, 17, 28	Y
Gypton SA1360 (Contains: Hydrochloric acid)	A, B	2	Z
H.B.M. (Volatile Oil) (Contains: 1,3-Pentadiene)	A, B	2, 10, 14, 21	Y
Halliburton A-SPERSE (Contains: Ethoxylated long chain (C16+) alkyloxyalkylamine)	A, B	2, 6, 17, 23, 28	Y
HiTEC 9345S (Contains: Polyolefin amide alkeneamine (C17+), Zinc alkyl dithiophosphate (C3-C14) and mineral oil)	A, B	2, 22, 23	Y
HYDT16671SP (Contains: Methyl alcohol; Poly nalkylmethacrylamide ammonium acrylate copolymer (20% solution in DEGME))	A, B	2, 17, 28	Y
IP CLEAN LX (Contains: Dodecane (all isomers))	A, B	2	Y
IP SOLVENT 1620 (Contains: Dodecane (all isomers))	A, B	2	Y
Kogasol 56 (Contains: Hexane (all isomers) and Heptane (all isomers))	A, B	2, 17, 28	X
Linealene 124 (Contains: Dodecene (all isomers))	A, B	2, 17, 28	X
LUBAD 1798 (Contains: Alkyl (C18-C28) toluene sulfonic acid, calcium salts, high overbase; Polyolefin amide alkeneamine polyol and mineral oil)	A, B	2, 17, 22, 28	Y
LUBAD 1807 (Contains: Alkyl(C18-C28) toluenesulfonic acid, calcium salts, low overbase and Zinc alkyl dithiophosphate (C3-C14) and mineral oil)	A, B	2, 22	Y
LUBAD 1887 (Contains: Calcium long chain alkyl phenate sulphide (C8-C40); Alkyl (C18-C28) toluenesulphonic acid, calcium salts, high overbase and mineral oil)	A, B	2, 6, 22	Y
Lubrizol 4980A (Contains: Polyolefin amide alkeneamine (C17+); Zinc alkyl dithiophosphate (C3-C14) and Mineral oil)	A, B	2, 22	Y
Lubrizol 16005 (Contains: Calcium long chain alkaryl sulphonate (C11-C50) / Zinc alkyl dithiophosphate (C3-C14) and mineral oil)	A, B	2, 22	Y
Lubrizol 20017 (Contains: Polyolefin amide alkeneamine (C17+), Alkenyl (C11+) amide and mineral oil)	A, B	2, 22	Y
Lubrizol CV2301 (Contains: Polyolefin amide alkeneamine (C17+); Zinc alkyl dithiophosphate (C3-C14) and mineral oil)	A, B	2, 22	Y

LIST OF "TRADE NAMED" PRODUCTS	Conditions of Carriage		Pollution Category
	Products ^{4)5) *}	Tanks / Tank groups	
Lubrizol CV2307 (Contains: Polyolefin amide alkeneamine (C17+); Zinc alkyl dithiophosphate (C3-C14))	A, B	2, 22	Y
Lubrizol CV6503 (Contains: Polyolefin amide alkeneamine (C17+); Zinc alkyl dithiophosphate (C3-C14) and mineral oil)	A, B	2, 22	Y
Lubrizol CV7050 (Contains: Calcium long chain alkaryl sulphonate (C11-C50) / Zinc alkyl dithiophosphate (C3-C14) and mineral oil)	A, B	2, 22	Y
Lubrizol FC8051X (Contains: Polyolefin amide alkeneamine (C17+); Zinc alkyl dithiophosphate (C3-C14) and mineral oil)	A, B	2, 22	Y
Lubrizol FC9050 (Contains: Calcium alkaryl sulphonate (C11-C50); Zinc alkyl dithiophosphate (C3-C14) and Mineral oil)	A, B	2, 22	Y
Lubrizol FC9052X (Contains: Calcium alkaryl sulphonate (C11-C50), Zinc alkyl dithiophosphate (C3-C14) and Mineral oil)	A, B	2, 22	Y
Lubrizol MAR 515U (Contains: Calcium long chain alkyl phenate sulphide (C8-C40); Alcohols (C12+), primary, linear)	A, B	2, 22, 23	Y
Lubrizol MD9C01X (Contains: Calcium long-chain alkyl phenate sulphide (C8-C40))	A, B	2, 6, 22	Y
Lubrizol MD9C70X (Contains: Calcium long chain alkyl phenate sulphide (C8-C40))	A, B	2, 22	Y
Lubrizol PV1023 (Contains: Calcium alkaryl sulphonate (C11-C50), Alkenyl (C11+) amide and mineral oil)	A, B	2, 17, 22, 28	Y
Lubrizol PV1127K (Contains: Polyolefin amide alkeneamine (C17+); Alkenyl (C11+) amide and mineral oil)	A, B	2, 22	Y
Lubrizol PV3400X (Contains: Polyolefin amide alkenemamine (C17+) and mineral oil)	A, B	2, 22	Y
Lubrizol PV6500X (Contains: Alkylated (C4-C9) hindered phenols, Polyolefin amide alkeneamine (C17+) and mineral oil)	A, B	2, 17, 22, 28	Y
Lubrizol PV6501X (Contains: Alkylated (C4-C9) hindered phenols, Polyolefin amide alkeneamine (C17+) and mineral oil)	A, B	2, 22	Y
Lubrizol PV7053 (Contains: Calcium alkaryl sulphonate (C11-C50), Alkenyl (C11+) amide and mineral oil)	A, B	2, 22	Y
Lubrizol SLF6006 (Contains: Polyolefin amide alkeneamine (C17+) and Calcium long-chain alkyl phenate sulphide (C8-C40))	A, B	2, 22, 23	Y
MPG Basic (Contains: Poly(2-8) alkylene glycol monoalkyl (C1-C6) ether and sodium methylate)	A, B	2, 17, 28	Y

LIST OF "TRADE NAMED" PRODUCTS	Conditions of Carriage		Pollution Category
	Tanks / Tank groups	Footnotes	
Products ⁴⁾⁵⁾ *			
OLOA 760A (Contains: Alkyl(C18-C28) toluenesulfonic acid, calcium salts, high overbase, calcium long-chain alkyl phenate sulphide (C8-C40) and mineral oil)	A, B	2, 17, 22, 28	Y
OLOA 865G (Contains: Calcium long-chain alkylphenate sulphide (C8-C40))	A, B	2, 6, 17, 22, 28	Y
OLOA 4594R (Contains: Alkyl(C18-C28) toluenesulfonic acid, calcium salts, low overbase, zinc alkyl dithiophosphate (C3-C14) and mineral oil)	A, B	2, 17, 22, 28	Y
OLOA 8888 (Contains: Zinc alkyl dithiophosphate (C3-C14) and mineral oil)	A, B	2, 22	Y
OLOA 9790F (Contains: Alkyl (C18-C28) toluene sulfonic acid, calcium salts, high overbase; Calcium long chain alkyl phenate sulphide (C8 - C40) and mineral oil)	A, B	2, 17, 22, 28	Y
OLOA 9999 (Contains: Alkyl(C18-C28) toluenesulfonic acid, calcium salts, high overbase, zinc alkyl dithiophosphate (C3-C14) and mineral oil)	A, B	2, 17, 22, 28	Y
OLOA 16310 (Contains: Calcium alkyl (C10-C28) salicylate; Long-chain alkylphenol (C14-C18) and mineral oil)	A, B	2, 17, 22, 28	Y
OLOA 48014 (Contains: Calcium long chain alkyl (C18-C28) salicylate; Zinc alkyl dithiophosphate (C3-C14) and mineral oil)	A, B	2, 17, 22, 23, 28	Y
OLOA 48018 (Contains: Calcium long-chain alkyl (C18-C28) salicylate and mineral oil)	A, B	2, 17, 22, 28	Y
OLOA 49819 (Contains: Alkyl (C18-C28) toluene sulphonic acid, calcium salts, high overbase, Calcium long-chain alkyl phenate sulphide (C8-C40) and mineral oil)	A, B	2, 17, 22, 28	Y
OLOA 49822 (Contains: Calcium long-chain alkyl phenate sulphide (C8-C40) and mineral oil)	A, B	2, 22	Y
OLOA 49888 (Contains: Alkyl (C18-C28) toluenesulfonic acid, calcium salts, high overbase, Calcium long-chain alkyl phenate sulphide (C8-C40) and mineral oil)	A, B	2, 17, 22, 28	Y
OLOA 54000 (Contains: Alkyl(C18-C28) toluenesulfonic acid, calcium salts, low overbase, Zinc alkyl dithiophosphate (C3-C14) and mineral oil)	A, B	2, 17, 22, 28	Y
OLOA 54013 (Contains: Alkyl (C18-C28) toluenesulphonic acid, calcium salts, low overbase; Zinc alkyl dithiophosphate (C3-C14) and mineral oil)	A, B	2, 17, 22, 28	Y
OLOA 55501 (Contains: Alkyl (C18-C28) toluenesulfonic acid, calcium salts, high overbase, Zinc alkyl dithiophosphate (C3-C14) and mineral oil)	A, B	2, 17, 22, 28	Y

LIST OF "TRADE NAMED" PRODUCTS	Conditions of Carriage		Pollution Category
	Products ⁴⁾⁵⁾ *	Tanks / Tank groups	
OLOA 58000 (Contains: Alkyl(C18-C28) toluenesulfonic acid, calcium salts, low overbase, Zinc alkyl dithiophosphate (C3-C14) and mineral oil)	A, B	2, 17, 22, 28	Y
OLOA 59168 (Contains: Alkyl (C18-C28) toluene sulfonic acid, calcium salts, high overbase; Polyolefin amide alkeneamine polyol and mineral oil)	A, B	2, 17, 22, 28	Y
OLOA 59211 (Contains: Alkyl (C18-C28) toluene sulfonic acid, calcium salts, borated; Polyolefin amide alkeneamine polyol and mineral oil)	A, B	2, 17, 22, 28	Y
OLOA 59716 (Contains: Alkyl(C18-C28) toluenesulfonic acid, calcium salts, low overbase, Zinc alkyl dithiophosphate (C3-C14) and mineral oil)	A, B	2, 17, 22, 28	Y
OLOA 59726 (Contains: Alkyl (C18-C28) toluensulfonic acid, calcium salts, high overbase, Zinc alkyl dithiophosphate (C3-C14) and mineral oil)	A, B	2, 17, 22, 28	Y
OLOA 59762 (Contains: Alkyl(C18-C28) toluenesulfonic acid, calcium salts, high overbase, Zinc alkyl dithiophosphate (C3-C14) and mineral oil)	A, B	2, 6, 17, 22, 28	Y
OLOA 59766 (Contains: Alkyl (C18-C28) toluenesulfonic acid, calcium salts, high overbase, Zinc alkyl dithiophosphate (C3-C14) and mineral oil)	A, B	2, 17, 22, 28	Y
OLOA 59770 (Contains: Alkyl (C18-C28) toluenesulphonic acid, calcium salts, low overbase; Zinc alkyl dithiophosphate (C3-C14) and mineral oil)	A, B	2, 17, 22, 28	Y
OLOA 65747 (Contains: Alkyl (C18-C28) toluenesulfonic acid, calcium salts, low overbase, Zinc alkyl dithiophosphate (C3-C14) and mineral oil)	A, B	2, 17, 22, 28	Y
OLOA 99470E (Contains: Alkyl (C18-C28) toluenesulfonic acid, calcium salts, low overbase, Zinc alkyl dithiophosphate (C3-C14) and mineral oil)	A, B	2, 17, 22, 28	Y
OLOA275JR (Contains: Calcium long-chain alkyl (C18-C28) salicylate and mineral oil)	A, B	2, 22	Y
PARA16592A (Contains: Naphthalene (molten); and Alkyl (C5-C8) benzenes)	A, B	2, 17, 28	Y
Paraset 29H (Contains: Alkyl (C5-C8) benzenes and Poly(2+)cyclic aromatics)	A, B	2, 17, 28	X
Paraset 32S (Contains: Alkyl (C9+) benzenes and Poly(2+)cyclic aromatics)	A, B	2, 17, 28	X
PE CIW-NO (Contains: Aniline)	A, B	2, 17, 28	Y
Pentylol (Contains: n-Amyl alcohol and sec-Amyl alcohol)	A, B	2, 17, 28	Y

LIST OF "TRADE NAMED" PRODUCTS	Conditions of Carriage		Pollution Category
	Tanks / Tank groups	Footnotes	
Products ⁴⁾⁵⁾ *			
Pilot 140 (Contains: Alkyl (C9+) benzenes and Poly(2+)cyclic aromatics)	A, B	2, 17, 28	X
Pilot 150H (Contains: Alkyl (C9+) benzenes and Poly(2+)cyclic aromatics)	A, B	2, 17, 28	X
R-50359 (Contains: Naphthalene (molten); Alkyl (C5-C8) benzenes)	A, B	2, 17, 28	Y
RBHC (Exxon Mobil) (Contains: Heptane and Benzene)	A, B	2, 17, 28	X
RM192D (Contains: Calcium long chain alkyl phenate sulphide (C8-C40); Zinc alkyl dithiophosphate (C3-C14))	A, B	2, 22	Y
SASC2013 (Contains: Sodium hydroxide (30% or less)/Sodium aluminate (25% or less) solution)	A, B	2, 17, 28	Y
SBM CL-NO XL (Contains: Boric acid)	A, B	2, 17, 23, 28	Y
SBM DM Preflush (Contains: Ethylene glycol monoalkyl ethers)	A, B	2, 17, 28	Y
SCAL11360A (Contains: Hydrochloric acid)	A, B	2	Z
SCAL11650A (Contains: Ethylene glycol)	A, B	2	Z
SCALETREAT 14345 (Contains: Ethylene glycol monoalkyl ethers)	A, B	2	Y
SCALETREAT SD 12154 (Contains: Potassium hydroxide solution)	A, B	2, 23	Z
SCALETREAT TP 8385 (Contains: Ethylene glycol)	A, B	2	Z
SCALETREAT XL36 (Contains: Calcium chloride solution and Maleic acid/allyl sulfonic acid copolymer with phosphonate groups, partial sodium salt (aqueous solution))	A, B	2	Z
SCAVTREAT 15211 (Contains: 1,3,5-Hexahydrotriethanol-1,3,5-triazine solution)	A, B	2, 17, 28	Y
SD-4127 (Contains: Acetic acid and 1,3,5-Hexahydrotriethanol-1,3,5-triazine)	A, B	2, 17, 28	Y
SD-4206 (Contains: Sodium hydroxide)	A, B	2	Z
Secure SC2020 (Contains: 3-(Triethoxysilyl)propylamine)	A, B	2, 17, 28	Z
SI-4126 (Contains: Ethylene glycol monoalkyl ethers)	A, B	2	Z
SI-4154 (Contains: Ethanolamine)	A, B	2, 17, 28	Z
SI-4489 (Contains: 2,6-Diaminohexanoic acid phosphonate mixed salts solution)	A, B	2	Z
Solidless Kill Pill Weighted (Contains: Sodium bromide solution (less than 50%))	A, B	2, 17, 22, 23, 28	Y
SOLVTREAT 3030 (Contains: Alkanes(C10-C26), linear and branched (flashpoint >60°C) and Ethylene glycol monoalkyl ethers)	A, B	2	Y
SOLVTREAT 3062 (Contains: Ethylene glycol monoalkyl ethers)	A, B	2	Z

LIST OF "TRADE NAMED" PRODUCTS	Conditions of Carriage		Pollution Category
	Tanks / Tank groups	Footnotes	
Products ⁴⁾⁵⁾ *			
SOLVTREAT 12093 (Contains: Ethylene glycol monoalkyl ethers)	A, B	2	Z
SURFLO PLUS®SFPEC1610A (Contains: Ethylene glycol monoalkyl ethers)	A, B	2, 17, 28	Y
Surfom CS 5015 (Contains: Ethoxylated Tallow Amine)	A, B	2, 12, 17, 22, 23, 28	X
Talumar B (Contains: Calcium long chain alkyl phenate sulphide (C8-C40))	A, B	2, 22	Y
Ucarsol (Contains: Piperazine, 68% solution)	A, B	2, 6, 17, 22, 23, 28	Y
Vertiscreen 052R (Contains: Ethyl alcohol)	A, B	2	Z
VX 8925 (Contains: Naphthalene and Alkyl (C5-C8) benzenes)	A, B	2, 17, 28	Y
Waksol 911 A (Contains: n-Alkanes (C9-C11); Paraffin wax)	A, B	2, 17, 23, 28	Y
Waksol 911 B (Contains: n-Alkanes (C9-C11); Paraffin wax)	A, B	2, 17, 22, 23, 28	Y

Footnotes

Note No.	Note
2	This product is not yet formally included in the Code / MARPOL Annex II or the carriage permission is based on a provisional assessment of the pollution and / or safety hazards. The inclusion of this product is based on information given in document: MEPC.2/Circ.25 Annex 3
5	Loading restrictions due to actual cargo density and/or cargo tank density limitations may apply to one or more tank groups. Refer to cargo shipping documents for actual cargo density.
6	The density of this product has not been considered when assigning tank groups. Refer to cargo shipping documents for actual cargo density.
10	Heating coils (or deck cargo heaters) in tanks carrying this product shall be blanked off or secured by equivalent means.
12	This product shall be carried under an "inerted" cargo tank environmental condition in accordance with IBC Code Chapter 9.
14	Care must be taken to ensure that this product is sufficiently inhibited to prevent polymerization at all times during the voyage.
17	When carrying this product in tanks without inherent separate cargo piping and vent systems, separation must be ensured by removing spool pieces etc. as described in Ch.3.1.4 of the IBC Code. Such means for obtaining the separation are not acceptable if located within the cargo tanks. Alternatively it must be ensured that all tanks / compartments connected to systems not so separated are only loaded with the same product.
21	This product shall not be carried adjacent to a cargo or fuel oil tank being excessively heated.
22	The cargo's viscosity at 20 deg C shall be specified on a shipping document and if exceeding 50 mPa.s at 20 deg C, the temperature at which the cargo has a viscosity of 50 mPa.s shall be specified in the shipping document.
23	The cargo's melting point shall be indicated in the shipping document.
28	When carrying this product it is required that the ship is provided with equipment and consumables for testing for presence of toxic cargo vapours. In case suitable toxic vapour detection equipment is not available the requirements in the IBC Code item 13.2.3 must be adhered to. Ref. Code items 14.2.4 and 16.4.2.2.

Note No.	Note
	GENERAL NOTES
G.N.	The suitability of the materials of construction, coatings or linings for the various products has not been considered when producing this "List of Products". - The Manager / Owner is responsible for the ship being provided with compatibility information for such materials. - The "Shipper" is responsible for providing relevant compatibility information for the cargoes. - The Master is responsible for ensuring that cargoes unsuitable for the ship / the tank are not carried. Reference is made to the IBC Code Chapter 6.
G.N.	This LIST OF PRODUCTS has been produced taking fully into account all amendments to the Code up to and including the "REVISED Annex II" and the "2019 Amendments to the IBC Code" with entry into force 1 January 2021.
G.N.	Each pair of cargo tanks only to be loaded with the same product.
G.N.	Cargoes, residues of cargoes or mixtures containing cargoes, which react in a hazardous manner with other cargoes, residues or mixtures, shall be segregated from such other cargoes with respect to stowage and pipe separation. Ref. IBC Code item 3.1.3.
G.N.	Unless otherwise required by the Code the tanks may be filled up to 98% of their capacity, however, the cargo tanks are to be filled to such a level only that at the maximum temperature expected during transport sufficient expansion space is left. The following cargo density limitations apply: Tank Group A: 1.54t/m ³ @ 98%; 1.71t/m ³ for partial filling; P/V Valve setting 0.2 Bar Tank Group B: 1.54t/m ³ @ 98%; 1.71t/m ³ for partial filling; P/V Valve setting 0.2 Bar

Tanks/tank groups

TANK GROUPS

Tank group name	Tank name/Tank identification
A	CT 1P CT 1S CT 2P CT 2S CT 3P CT 3S CT 4P CT 4S CT 5P CT 5S CT 6P CT 6S
B	CT 7P CT 7S